

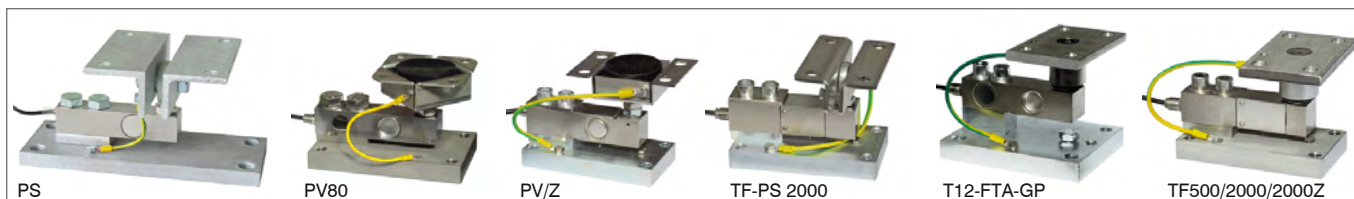


Capacity from 500 kg to 5000 kg



- 17-4 PH STAINLESS STEEL
- COMBINED ERROR $\leq \pm 0.02\%$
- PROTECTION CLASS IP67

MOUNTING KITS



CAPACITY	kg	ACCURACY CLASS C3	IECEx Ex	EAC	NET WEIGHT OF LOAD CELL (kg)	CODE
500		•	•	•	0.9	FTZ500
1000		•	•	•	0.9	FTZ1000
2000		•	•	•	0.9	FTZ2000
5000		•	•	•	1.5	FTZ5000

ON REQUEST

CERTIFICATIONS

OIML R60 C3

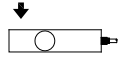
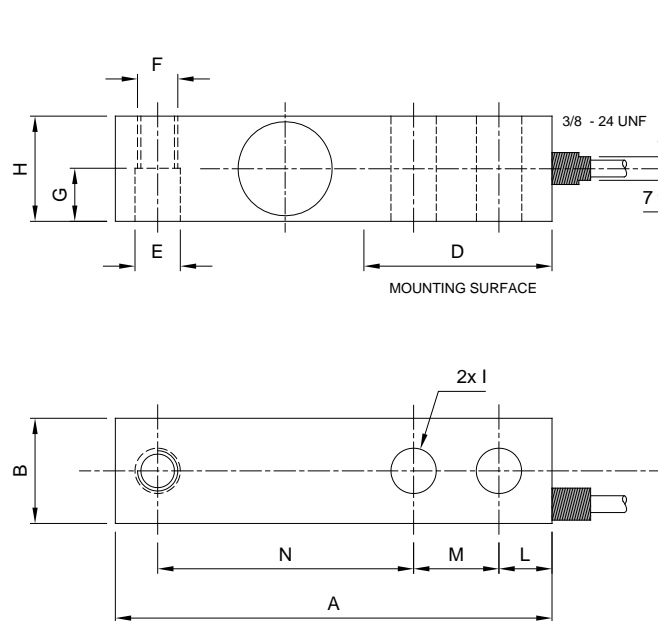
CERTIFICATIONS ON REQUEST

ATEX II 1GD (zone 0-1-2-20-21-22)

IECEx (zone 0-1-2-20-21-22)

Complies with the Eurasian Custom Union regulations (Russia, Belarus, Kazakhstan)

DIMENSIONS (mm)



	500 - 1000 2000 kg	5000 kg
A	130	171.5
B	31.3	36.8
D	56	76
E	Ø13.5	Ø20.7
F	M12x1.75	M20x2.5
G	15.8	19
H	31.3	36.8
I	Ø13.5	Ø20.7
L	15.8	19
M	25.4	38.1
N	76.2	95.3

TECHNICAL FEATURES

Material	17-4 PH stainless steel		
OIML R60 Accuracy class • Verification intervals	C3 • 3000		
Nominal load (E max)	500 - 1000 - 2000 kg	5000 kg	
Minimum verification interval (V min)	E max / 7500	E max / 9000	
Combined error	≤ ±0.02%		
Protection class	IP67		
Rated output	3 mV/V ±0.27%	Input resistance	350 Ω ±3.5
Temperature effect on zero	0.0018% °C	Output resistance	350 Ω ±3.5
Temperature effect on span	0.0014% °C	Zero balance	≤ ±1%
Compensated temperature range	-10 °C / +40 °C	Insulation resistance	>5000 MΩ
Operating temperature range	-35°C / +65°C	Safe overload (% of full scale)	150%
Creep at nominal load in 30 minutes	0.02%	Ultimate overload (% of full scale)	300%
Max supply voltage without damage	18 V	Deflection at nominal load	0.4 mm

ELECTRICAL CONNECTIONS

Cable length	5 m
Cable diameter	5 mm
Cores	4 x 0.20 mm ²



The Company reserves the right to make changes to the technical data, drawings and images without notice.