



Manufactured according to OIML R60 standards

Capacity from 15000 kg to 50000 kg



- 17-4 PH STAINLESS STEEL
- COMBINED ERROR $\leq \pm 0.03\%$
- PROTECTION CLASS IP68

MOUNTING KITS



| CAPACITY | kg | | | EAC | NET WEIGHT OF LOAD CELL (kg) | CODE |
|----------|----|--------------|---|-----|------------------------------|----------|
| 15000 | | • | • | • | 1.4 | CBX15000 |
| 30000 | | • | • | • | 2.2 | CBX30000 |
| 50000 | | • | • | • | 3.8 | CBX50000 |
| | | } ON REQUEST | | | | |

CERTIFICATIONS

CERTIFICATIONS ON REQUEST

| | |
|--|---|
| | Calibration report (ACCREDIA LAT traceability) |
| | ATEX II 1GD (zone 0-1-2-20-21-22) |
| | IECEx (zone 0-1-2-20-21-22) |
| | Complies with the Eurasian Custom Union regulations (Russia, Belarus, Kazakhstan) |

OPTIONS ON REQUEST

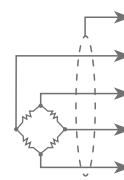
| DESCRIPTION |
|---|
| <p>Two redundant strain gauges Wheatstone bridges (350 Ω) with two output cables; for dual safety systems</p> |

TECHNICAL FEATURES

| | | | |
|-------------------------------------|--------------------------|-------------------------------------|-----------|
| Material | 17-4 PH stainless steel | | |
| Nominal load (E max) | 15000 - 30000 - 50000 kg | | |
| Combined error | ≤ ±0.035% | | |
| Protection class | IP68 | | |
| Rated output | 2 mV/V ±0.1% | Input resistance | 700 Ω ±5 |
| Temperature effect on zero | 0.005% °C | Output resistance | 700 Ω ±5 |
| Temperature effect on span | 0.005% °C | Zero balance | ±1% |
| Compensated temperature range | -10 °C / +50 °C | Insulation resistance | >10000 MΩ |
| Operating temperature range | -20 °C / +70 °C | Safe overload (% of full scale) | 150% |
| Creep at nominal load in 30 minutes | 0.03% | Ultimate overload (% of full scale) | 300% |
| Max supply voltage without damage | 15 V | Deflection at nominal load | 0.4 mm |

ELECTRICAL CONNECTIONS

| | |
|----------------|--|
| Cable length | 10 m |
| Cable diameter | 5 mm |
| Cores | 4 x 0.25 mm ² /6 x 0.14 mm ² |

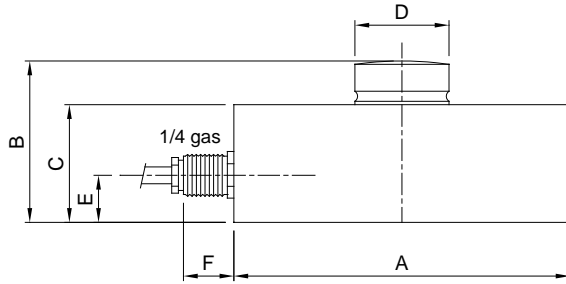


| | |
|------------------|--------|
| SHIELD | |
| + SIGNAL | GREEN |
| + EXCITATION | RED |
| + REF./SENSE | BLUE |
| - SIGNAL | WHITE |
| - EXCITATION | BLACK |
| - REF./SENSE | YELLOW |
| ■ where provided | |

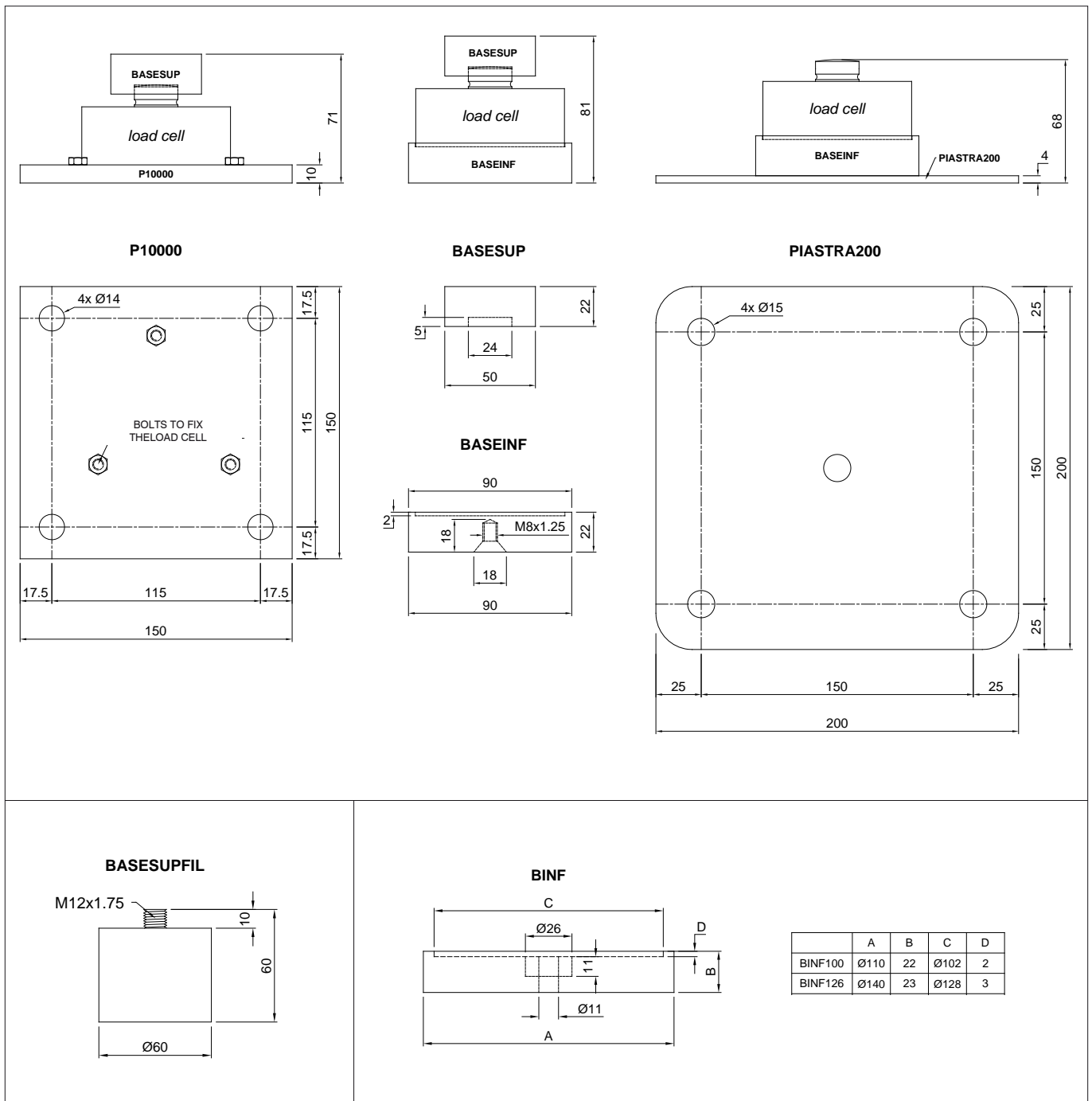
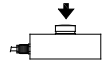
COMPLEMENTARY ACCESSORIES

| | DESCRIPTION | | CODE |
|--|---|--------------------------|-----------------------|
| | AISI 304 stainless steel threaded upper base for compression load cells. | M12x1.75 mm | BASESUPFIL |
| | AISI 304 stainless steel turned lower base for compression load cells. | Ø110x22 mm Ø140x23 mm | BINF100 BINF126 |
| | Lower plate and turned upper base in AISI 304 stainless steel. Load cell capacity: 15000 kg. | | BASESUP P10000 |
| | Turned upper and lower bases in AISI 304 stainless steel. Load cell capacity: 15000 kg. | | BASESUP BASEINF |
| | Lower plate and turned lower base in AISI 304 stainless steel. Load cell capacity: 15000 kg. | | BASEINF PIASTRA200 |
| | AISI 304 stainless steel adapter for mounting kits: | | |
| | - V15000 | Ø110x6 mm | ADAT100CBX15T |
| | - V30000 | Ø126x9 mm | ADAT126CBX30T |
| | - V100000 | Ø165x29 mm | ADAT165CBX50T |

DIMENSIONS (mm)



| kg | 15000 | 30000 | 50000 |
|----|-------|-------|-------|
| A | Ø82 | Ø100 | Ø126 |
| B | 44 | 48 | 54 |
| C | 32 | 35 | 40 |
| D | Ø22 | Ø28 | Ø35 |
| E | 14 | 14 | 14 |
| F | 15 | 15 | 15 |



Rev. 00 del 12/03/2015

The Company reserves the right to make changes to the technical data, drawings and images without notice.