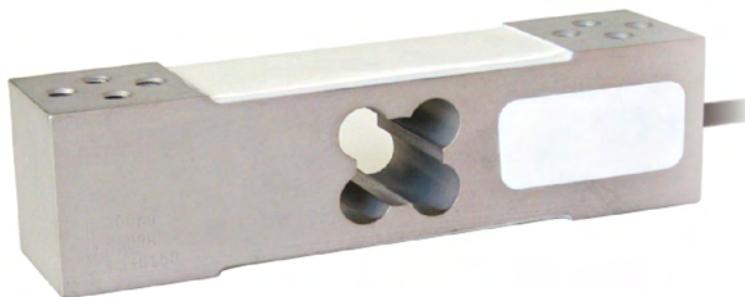
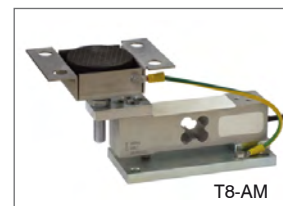




Capacity from 60 kg to 300 kg



MOUNTING KITS



- ALUMINUM ALLOY
- COMBINED ERROR $\leq \pm 0.02\%$ (0.017% C4; 0.014% C5)
- PROTECTION CLASS IP65

CAPACITY	kg	ACCURACY CLASS					EAC	PLATFORM DIMENSION (mm)	NET WEIGHT OF LOAD CELL (kg)	CODE
		C3	C4	C5						
60		•	•	•	•	•	400 x 400	0.6	AM60	
100		•	•	•	•	•	400 x 400	0.6	AM100	
150		•	•	•	•	•	400 x 400	0.6	AM150	
200		•	•	•	•	•	400 x 400	0.6	AM200	
300		•	•	•	•	•	400 x 400	0.6	AM300	

ON REQUEST

CERTIFICATIONS



OIML R60 C3

CERTIFICATIONS ON REQUEST



ATEX II 1GD (zone 0-1-2-20-21-22)



IECEx (zone 0-1-2-20-21-22)



OIML R60 C4/C5

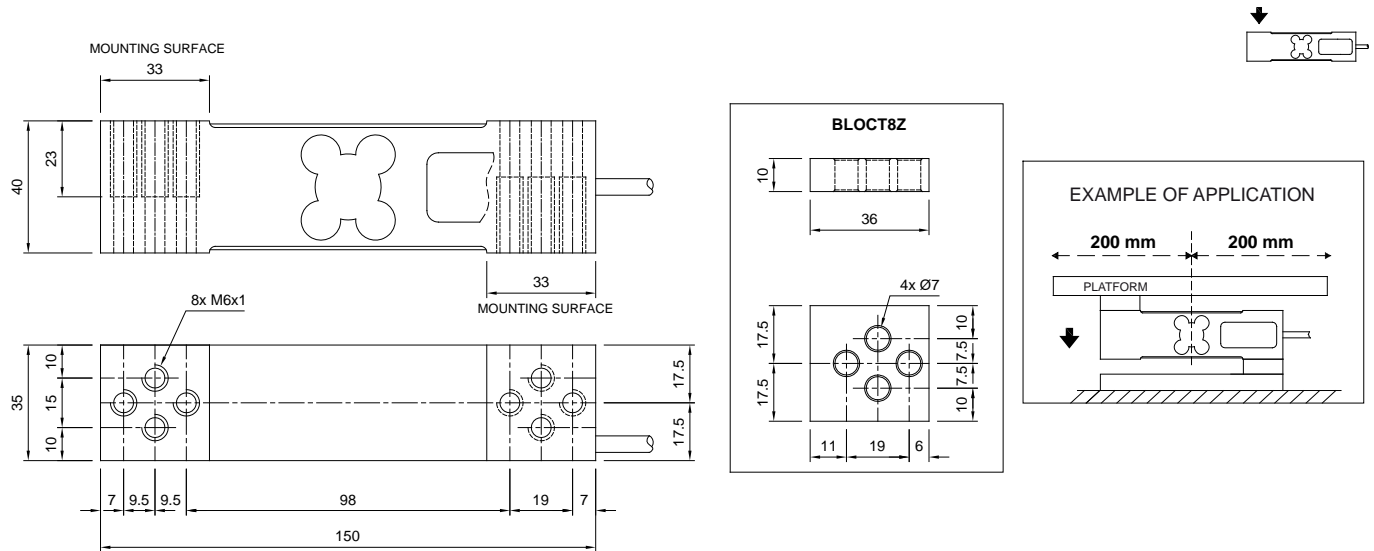


Complies with the Eurasian Custom Union regulations (Russia, Belarus, Kazakhstan)

COMPLEMENTARY ACCESSORIES

	DESCRIPTION	CODE
	Stainless steel and rubber waterproof kit.	IP68AMPRE
	Galvanized steel drawn block.	BLOCT8Z

DIMENSIONS (mm)



TECHNICAL FEATURES

Material	Aluminum alloy		
OIML R60 Accuracy class • Verification intervals	C3 • 3000	C4 • 4000	C5 • 5000
Nominal load (E max)	60 - 100 - 150 - 200 - 300 kg		
Minimum verification interval (V min)	E max / 10000	E max / 15000	E max / 20000
Combined error	≤ ±0.02%	≤ ±0.017%	≤ ±0.014%
Protection class	IP65		
Rated output	2 mV/V ±10%	Input resistance	406 Ω ±6
Temperature effect on zero	0.003% °C	Output resistance	350 Ω ±3
Temperature effect on span	0.002% °C	Zero balance	≤ ±2%
Compensated temperature range	-10 °C / +40 °C	Insulation resistance	≥5000 MΩ
Operating temperature range	-35 °C / +65 °C	Safe overload (% of full scale)	150%
Creep at nominal load in 30 minutes	0.025%	Ultimate overload (% of full scale)	300%
Max supply voltage without damage	18 V	Deflection at nominal load	0.5 mm

ELECTRICAL CONNECTIONS

Cable length	3 m
Cable diameter	5 mm
Cores	4 x 0.20 mm ²



The Company reserves the right to make changes to the technical data, drawings and images without notice.