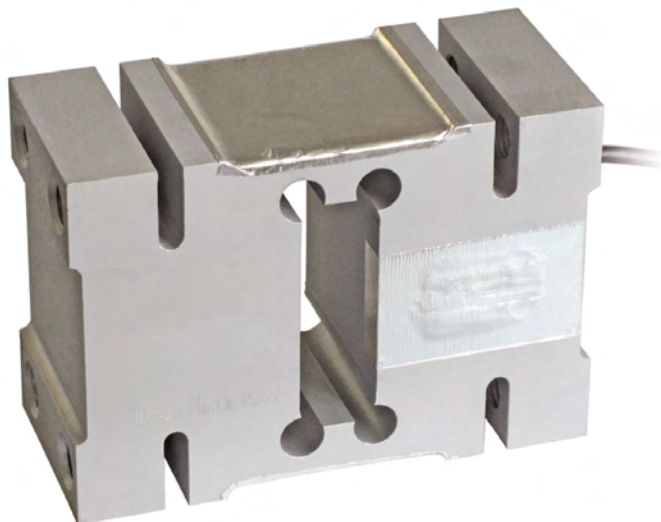




Capacity from 1000 kg to 2000 kg



- ALUMINUM ALLOY
- COMBINED ERROR  $\leq \pm 0.02\%$
- PROTECTION CLASS IP65

CAPACITY	kg			ERC	PLATFORM DIMENSION (mm)	NET WEIGHT OF LOAD CELL (kg)	CODE
1000		•	•	•	1200 x 1200	3.8	ATL1000
2000		•	•	•	1200 x 1200	3.8	ATL2000
		 ON REQUEST					

### CERTIFICATIONS



OIML R60 C3

CERTIFICATIONS ON REQUEST



ATEX II 1GD (zone 0-1-2-20-21-22)

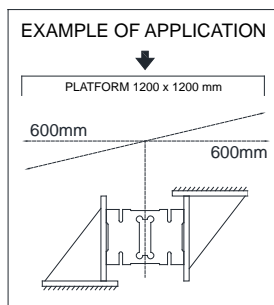
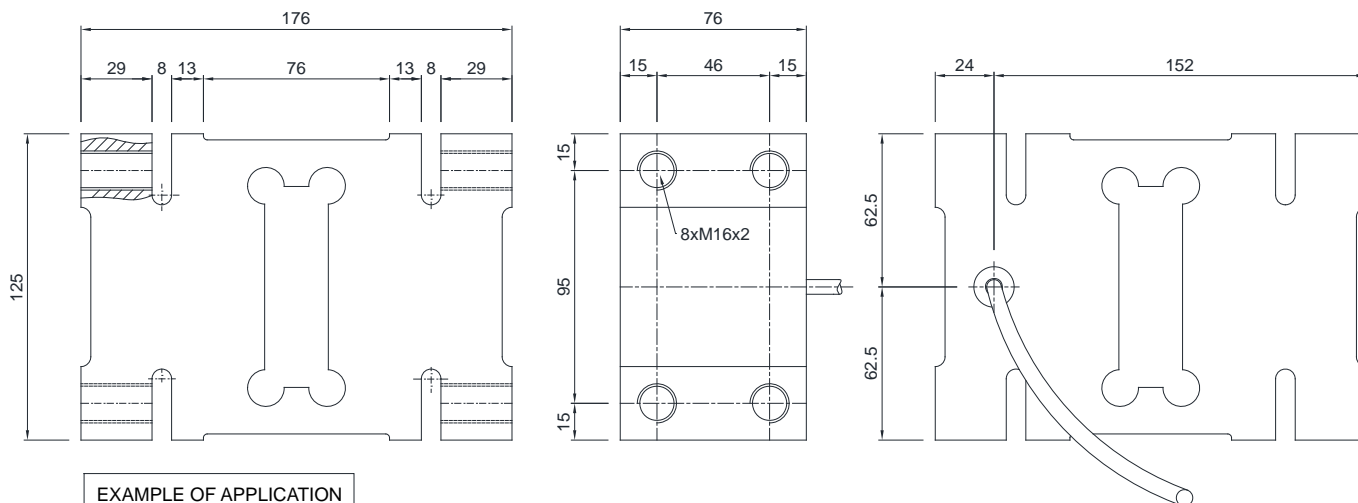


IECEx (zone 0-1-2-20-21-22)



Complies with the Eurasian Custom Union regulations (Russia, Belarus, Kazakhstan)

### DIMENSIONS (mm)

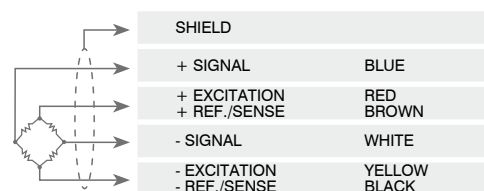


### TECHNICAL FEATURES

Material	Aluminum alloy		
OIML R60 Accuracy class • Verification intervals	C3 • 3000		
Nominal load (E max)	1000 - 2000 kg		
Minimum verification interval (V min)	E max / 7000		
Combined error	≤ ±0.02%		
Protection class	IP65		
Rated output	2 mV/V ±10%	Input resistance	406 Ω ±6
Temperature effect on zero	0.0017% °C	Output resistance	350 Ω ±3
Temperature effect on span	0.0014% °C	Zero balance	≤ ±1%
Compensated temperature range	-10 °C / +40 °C	Insulation resistance	≥5000 MΩ
Operating temperature range	-35 °C / +65 °C	Safe overload (% of full scale)	150%
Creep at nominal load in 30 minutes	0.02%	Ultimate overload (% of full scale)	300%
Max supply voltage without damage	18 V	Deflection at nominal load	0.8 mm

### ELECTRICAL CONNECTIONS

Cable length	3 m
Cable diameter	6 mm
Cores	6 x 0.20 mm <sup>2</sup>



The Company reserves the right to make changes to the technical data, drawings and images without notice.