

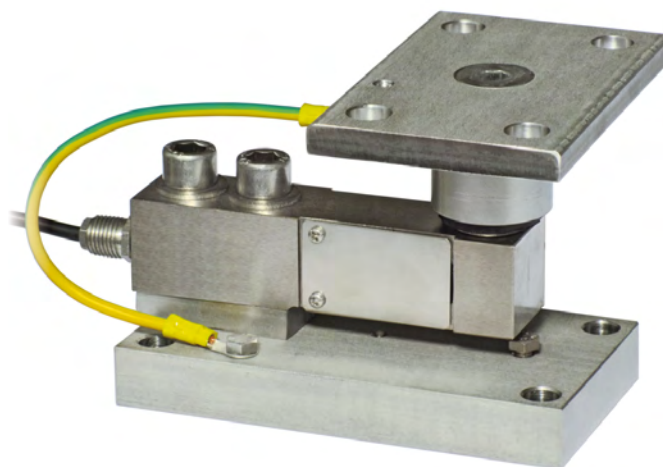
TF 500/2000

MOUNTING KIT for SHEAR BEAM load cells

LAUMAS®
ELETTRONICA

Series load cells: FTL - FTK - FTKL - FTP - FT-P - FTZ

Application range from 75 to 2000 kg



MAX STATIC LOAD kg	FOR LOAD CELLS	NET WEIGHT OF MOUNTING KIT (kg)	CODE
500	FTL - FTK - FTKL - FTP - FT-P - FTZ	2.3	TF500
2000	FTL - FTK - FTKL - FTP - FT-P - FTZ	2.9	TF2000
2000	FTL - FTK - FTKL - FTP - FT-P - FTZ	2.9	TF2000Z

Load cell not included.

DESCRIPTION

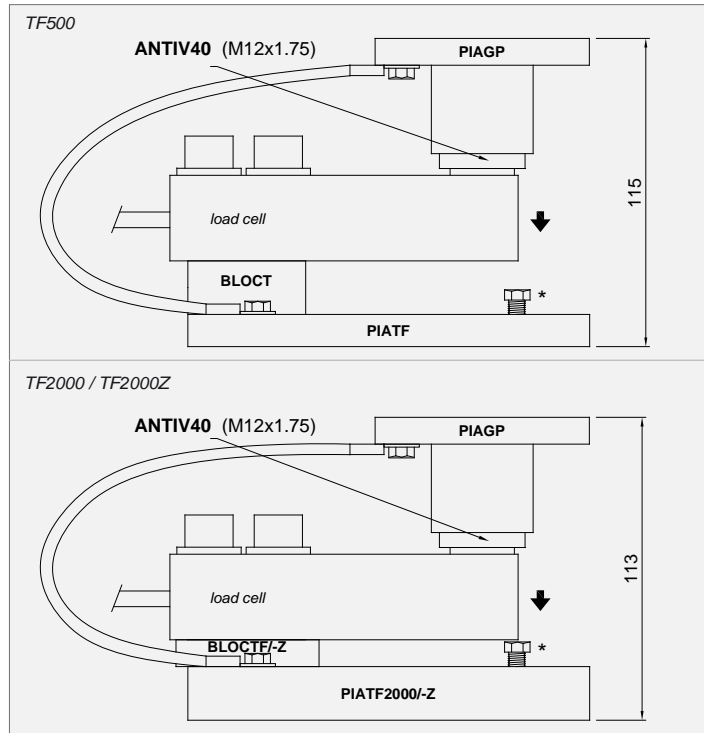
- Upper plate with a compression joint in AISI 304 stainless steel and rubber.
- Lower plate and block in AISI 304 stainless steel (TF500, TF2000) or in galvanized steel (TF2000Z).
- Misalignment compensation of the support plates structure.
- Adjustable height.
- Locking screw to avoid damage during transport and installation.

TF 500/2000

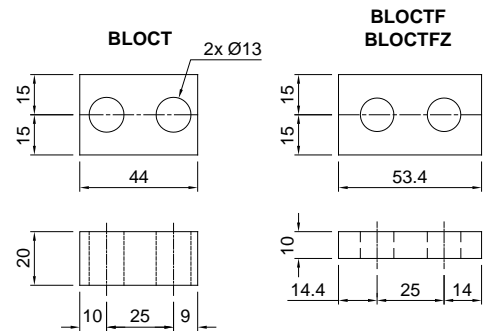
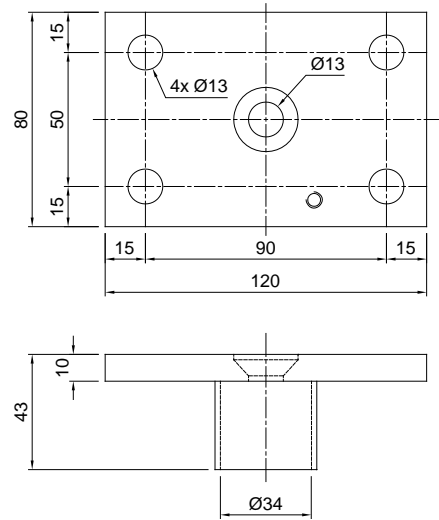
MOUNTING KIT for SHEAR BEAM load cells

DIMENSIONS AND TECHNICAL SPECIFICATIONS

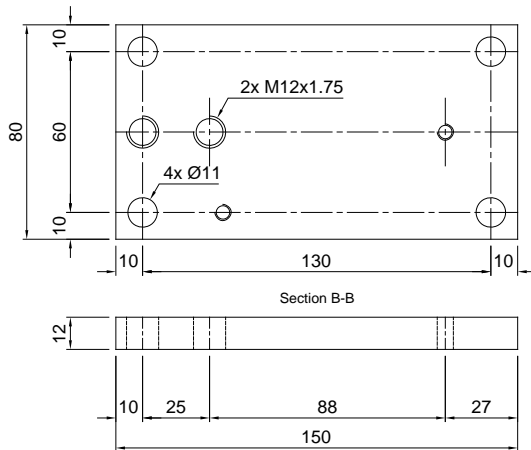
- During the transport and installation the lock (*) must touch under the load cell. After installation, move the lock away from the load cell.
- Interconnect the plates to the earthing.
- In case of structure with four-point support, if one-point does not touch the compression joint, you must proceed to insert a shim before fixing the bolts.



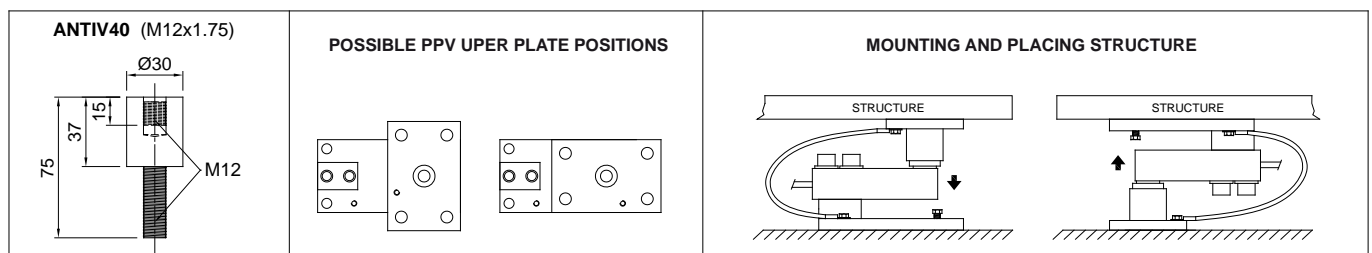
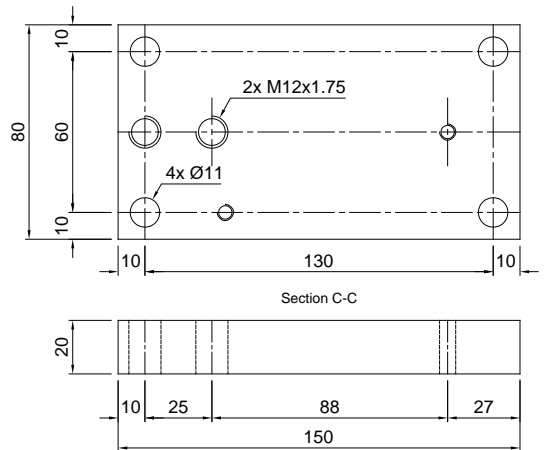
PIAGP



PIATF



PIATF2000 PIATF2000Z



The Company reserves the right to make changes to the technical data, drawings and images without notice.